

MOTOR CONTROL

**REGAL**

## MDHP Series High Performance Variable Frequency Drive

Encoder Option Manual



**marathon**<sup>™</sup>  
Drives

A Regal Brand

**REGAL**

[www.regalaustralia.com.au](http://www.regalaustralia.com.au)

Before using the product, thank you for using our **MDLV-HP Pulse Encoder Interface Option Module**.

### Safety Instruction

- To prevent injury and danger in advance for safe and correct use of the product, be sure to follow the Safety Instructions.
- The instructions are divided as '**WARNING**' and '**CAUTION**' which mean as follow.



#### **WARNING**

**This symbol indicates the possibility of death or serious injury.**



#### **CAUTION**

**This symbol indicates the possibility of injury or damage to property.**

- The meaning of each symbol in this manual and on your equipment is as follows.



**This is the safety alert symbol.**



**This is the dangerous voltage alert symbol.**

- After reading the manual, keep it in the place that the user always can Contact easily.
- Before you proceed, be sure to read and become familiar with the safety precautions at the beginning of this manual. If you have any questions, seek expert advice before you proceed. Do not proceed if you are unsure of the safety precautions or any procedure.



### **WARNING**

- **Be cautious about dealing with CMOS elements of option board.**  
It can cause malfunction by static electricity.
- **Connection changing like communication wire change must be done with power off.**  
It can cause communication faulty or malfunction.
- **Be sure to connect exactly between Inverter and option board.**  
It can cause communication faulty or malfunction.
- **Check parameter unit when setting parameter.**  
It can cause communication faulty.



## MDLV-HP Pulse Encoder Interface Option Module

---

Chapter 1.	Introduction .....	4
1.1	What This Product Contains .....	4
1.2	Option Module .....	4
1.3	Installment.....	5
Chapter 2.	Terminal Block Specification .....	6
2.1	Power Specification for Terminal Block .....	6
2.2	The Wiring Example of Pulse Encoder Option Module .....	7
Chapter 3.	Encoder Wiring and Switch Setting.....	9
3.1	+12/15V Complementary or Open Collector .....	9
3.2	+5V Line Drive.....	9
3.3	+12V Line Drive.....	10
Chapter 4.	Precaution when Encoder Wiring .....	11
4.1	Check the axis connection between the motor and encoder in installment.....	11
4.2	The Method of Wiring of Encoder Signal Cable .....	11

### Chapter 1. Introduction

#### 1.1 What This Product Contains

This option module is delivered in a package that also contains the following items:

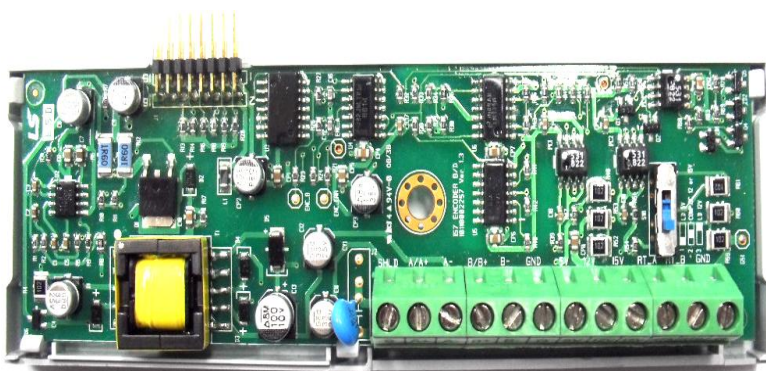
- 1) Pulse Encoder Interface Module : 1ea
- 2) User's Manual : 1ea
- 3) Screw (M3) : 1ea

#### 1.2 Option Module

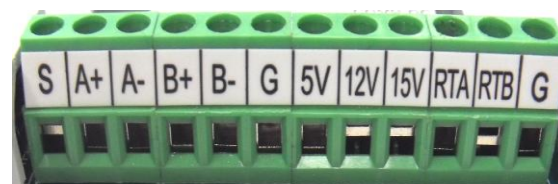


**Encoder Type  
Selecting Switch**

**Pulse Encoder Interface Module**



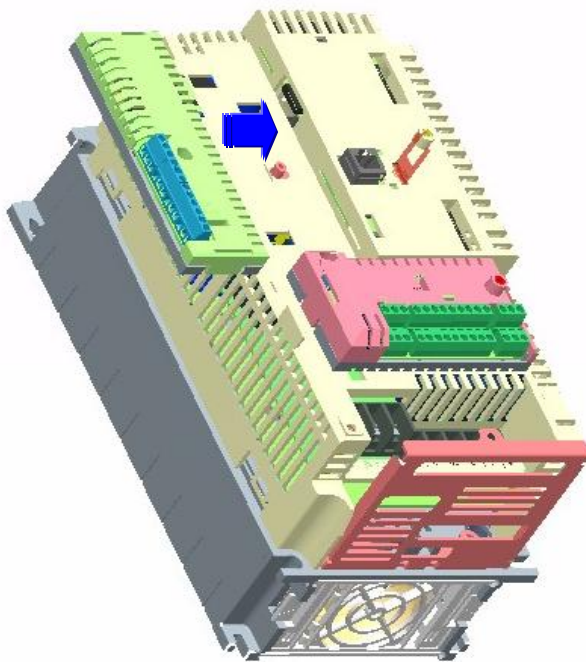
**Inside of Pulse Encoder  
Interface Module**



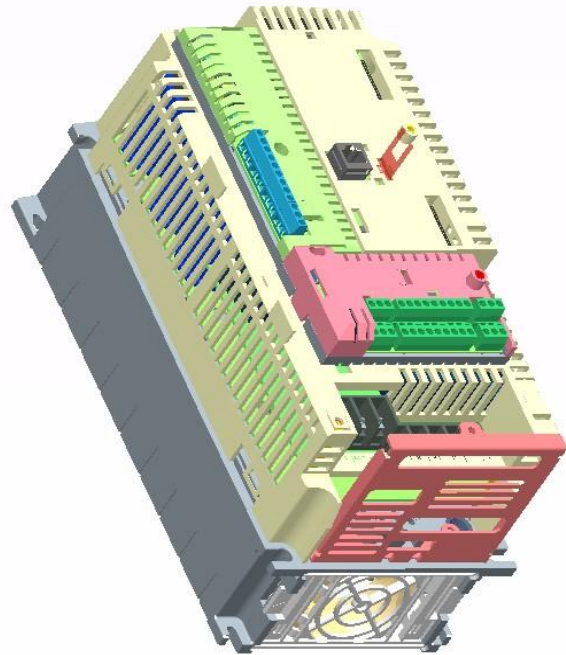
**Terminal Block of Pulse  
Encoder Interface Module**

### 1.3 Installment

The pictures describe the installation for pulse encoder interface option module on MDHP inverter body.



**Before the installment of pulse encoder interface module on inverter body**



**After the installment of pulse encoder interface module on inverter body**

## Chapter 2. Terminal Block Specification

### 2.1 Name and Description

S	A+	A-	B+	B-	G	5V	12	15	RT	RT	G
---	----	----	----	----	---	----	----	----	----	----	---

Signal	Symbol	Name	Description
Encoder Signal	Input Power	5V	+5V Encoder Line Drive power
		12V	+12V Encoder Line Drive/ <b>Open Collector</b> power
		15V	+15V Encoder Open Collector power
		G	Encoder power ground
		S	Connects the shielded wire of encoder signal cable
	Pulse Input	A+ / A-	Encoder A phase signal
		B+ / B-	Encoder B phase signal
	Pulse Output	RTA	Encoder A phase return signal
		RTB	Encoder B phase return signal
		G	Ground for Encoder return signal

### 2.2 Power Specification for Terminal Block

The measured voltage standard after connecting option module

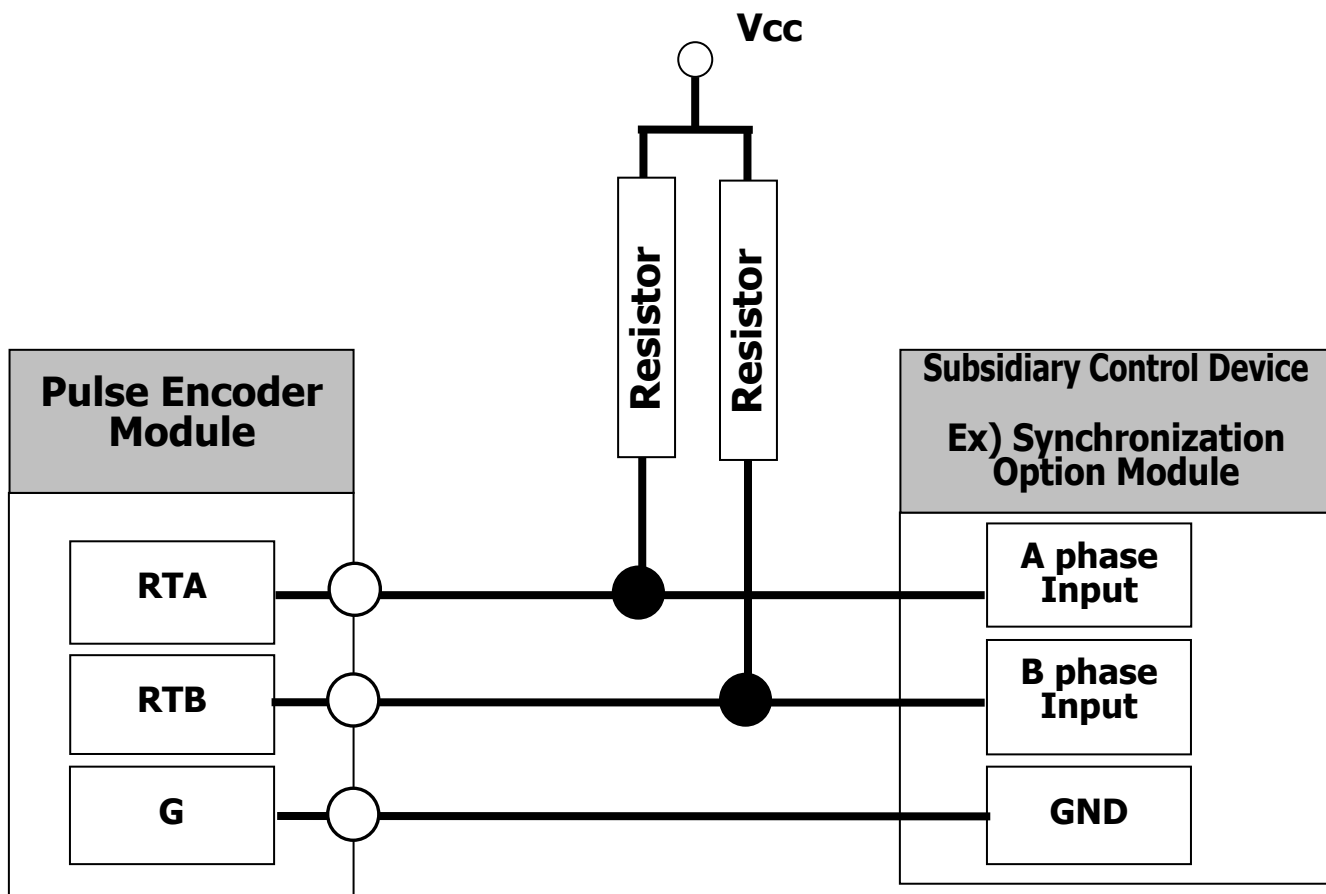
	Terminal Symbol	Vol. Range (V)	Max. Current (A)
Output Power	5V	4.5 ~ 5.5	0.2
	12V	11 ~ 13	0.07
	15V	14 ~ 16	0.07
Output Pulse	RTA	Below 26V	0.01
	RTB	Below 26V	0.01

## 2.3 The Wiring Example of Pulse Encoder Option Module

### 2.3.1 Using Pull Up/Down resistor

It is described the example that power and resistor are connected to RTA and RTB output of Pulse encoder interface option module.

- Power: 24V, Resistor: 1/2W 4.7K $\Omega$

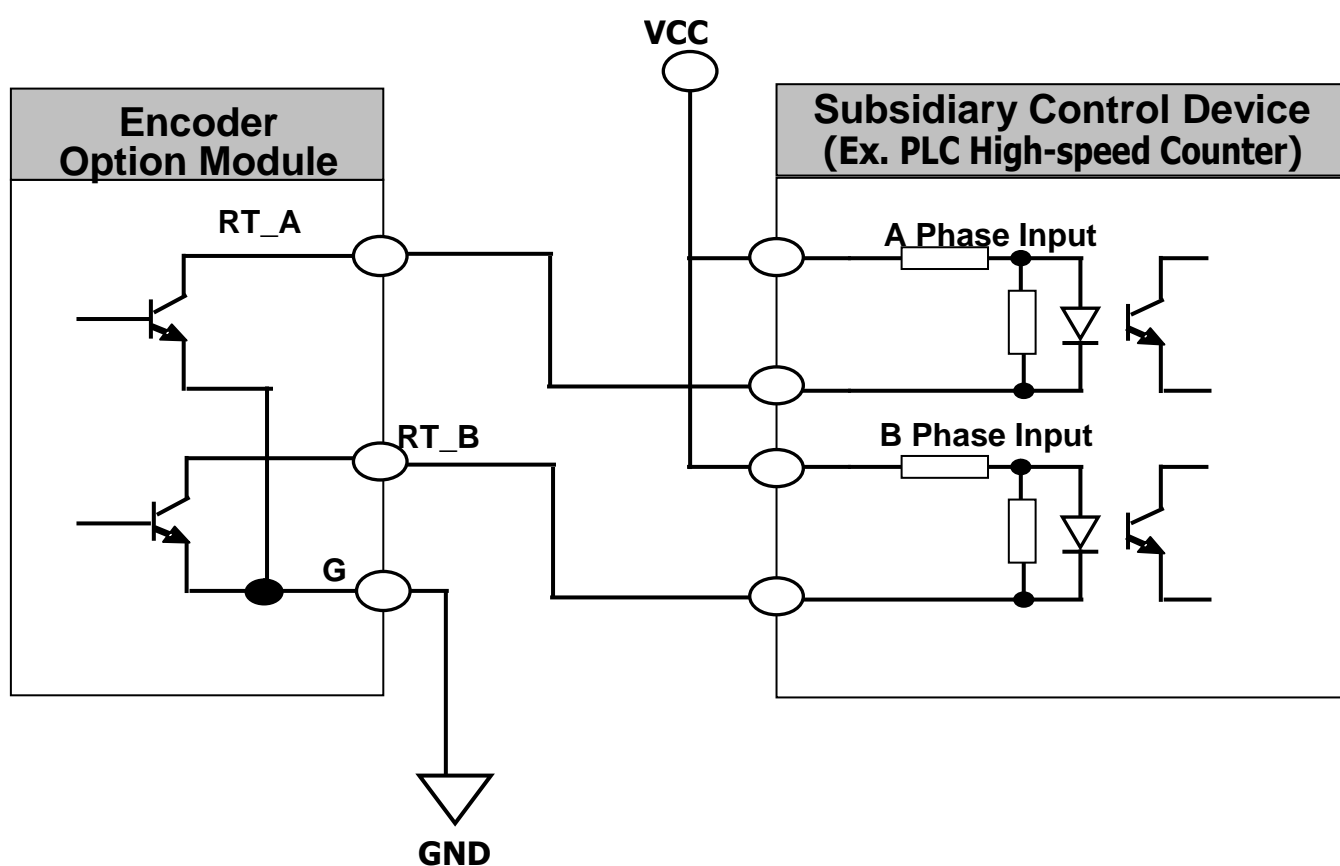




### 2.3.2 Using PLC

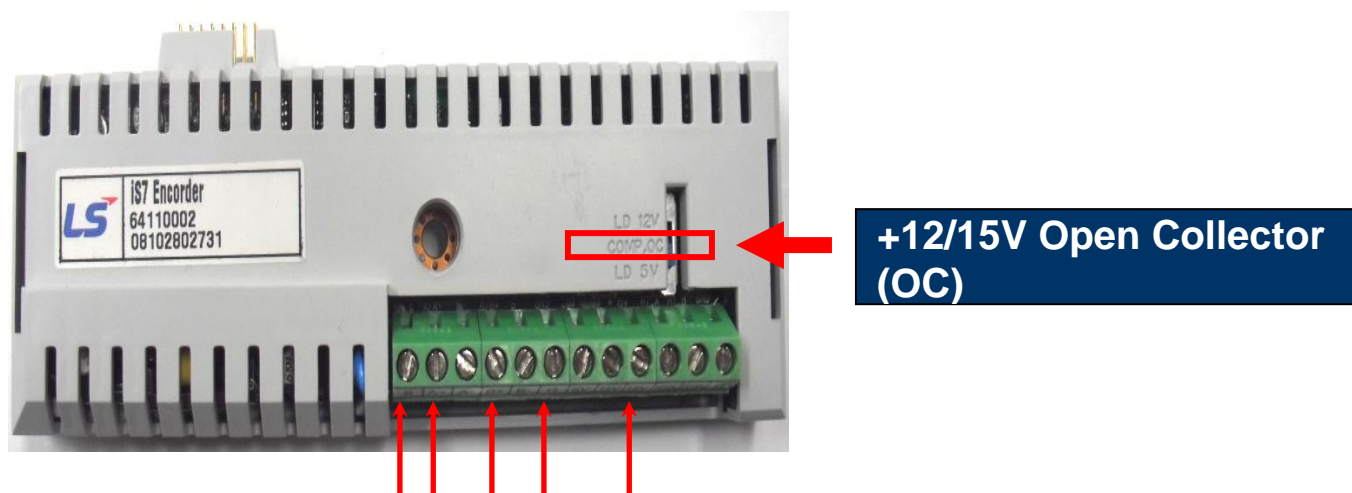
Consider the input circuit before wiring since the output of option module is open collector output.

The wiring when signal is connected from option module to High-speed counter of PLC is as shown below.

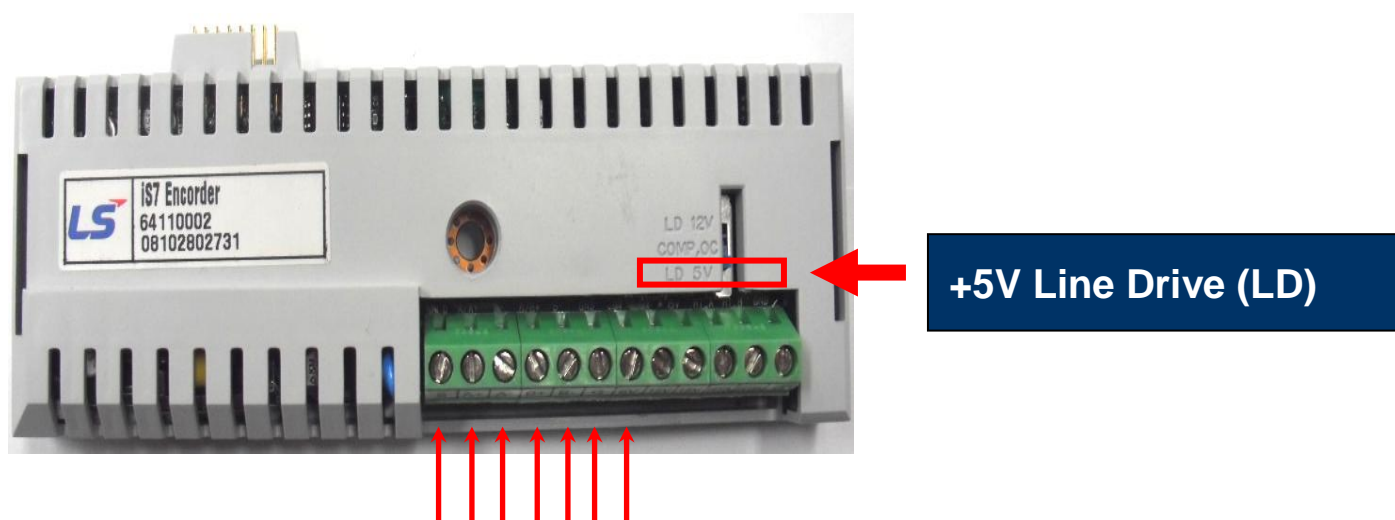


## Chapter 3. Encoder Wiring and Switch Setting

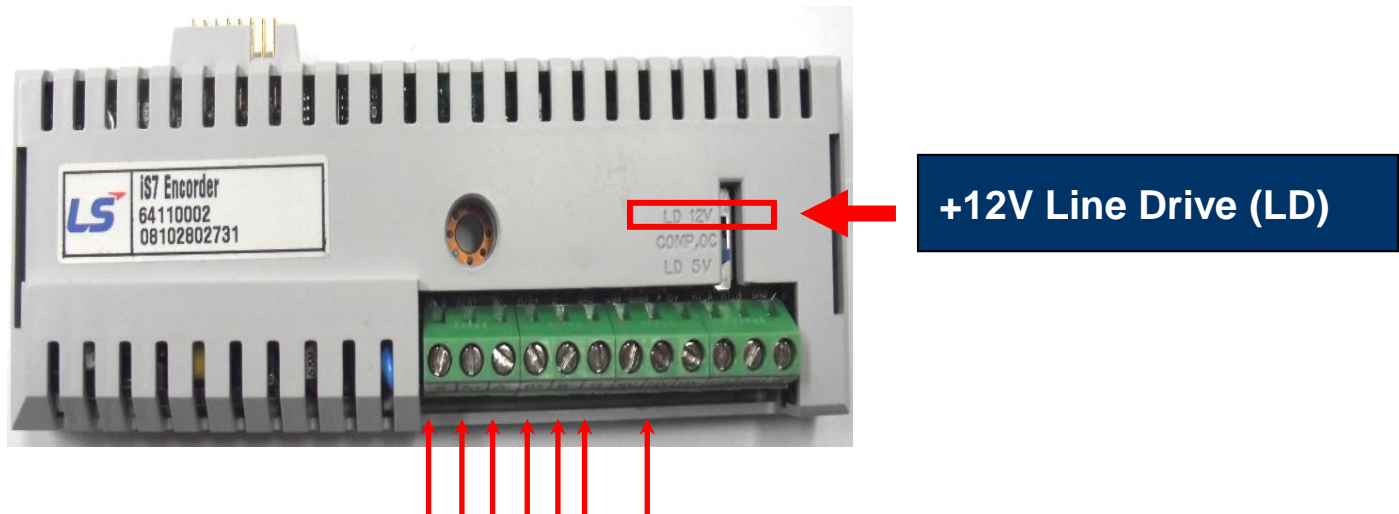
### 3.1 +12/15V Complementary or Open Collector



### 3.2 +5V Line Drive



### 3.3 +12V Line Drive



#### Warning

Do not change the switch setting of encoder type in operation. It can affect to the system since the trip is occurred by changing the setting.  
Please set the switch setting correctly to encoder type and operate the inverter.

## Chapter 4. Precaution when Encoder Wiring

### 4.1 Check the Axis Connection between the Motor and Encoder in Installment

- ① Encoder must be installed the place where the revolution speed is synchronized with the motor axis.

(Example) The axis of motor for load, The axis of motor at opposite side for traction machine

- ② Motor will be not operated or throbbled seriously when there is a slip between motor axis and encoder axis.
- ③ If connection status of axis is unstable (coupling angle, center of two axes etc..), the vibration synchronized with the number of revolution of motor will be occurred at constant speed operation since the torque ripple is occurred.

### 4.2 The Method of Wiring of Encoder Signal Cable

- ① Shielded cable must be connected after connection of shielded cable of twisted pair cable.
- ② Encoder signal cable has to be located as far as possible with power cable of inverter.
- ③ The output signal of encoder can be affected from noise.

## Warranty

<b>Maker</b>	Regal Australia		<b>Installation (Start-up) Date</b>	
<b>Model No.</b>	MDLV-HP		<b>Warranty Period</b>	
<b>Customer Information</b>	Name			
	Address			
	Tel.			
<b>Sales Office (Distributor)</b>	Name			
	Address			
	Tel.			

Warranty period is 12 months from date of sale. Subject to Regal Australia terms and conditions of sale

### IN-WARRANTY service information

If the defective part has been identified under normal and proper use within the guarantee term, contact your local authorized MD distributor or MD Service center.

### OUT-OF WARRANTY service information

The guarantee will not apply in the following cases, even if the guarantee term has not expired.

- Damage was caused by misuse, negligence or accident.
- Damage was caused by abnormal voltage and peripheral devices' malfunction (failure).
- Damage was caused by improper repair or altering by other than MD authorized distributor or service center.
- Damage was caused by an earthquake, fire, flooding, lightning, or other natural calamities.
- When MD nameplate is not attached.
- When the warranty period has expired.

## HEAD OFFICE

19 Corporate Ave / PO Box 2340  
Rowville VIC 3178 AUSTRALIA

Tel: +61 (0)3 9237 4000  
Fax: +61 (0)3 9237 4010

### AUSTRALIA

National Sales  
**1300 888 853**  
Drives Technical Support  
**1800 724 149**  
[www.regalaustralia.com.au](http://www.regalaustralia.com.au)  
[www.regalbeloit.com](http://www.regalbeloit.com)

REGAL BELOIT AUSTRALIA Pty Ltd  
ABN 61 122 303 084

### VICTORIA

MELBOURNE  
19 Corporate Avenue  
Rowville VIC 3178  
Tel: +61 (0)3 9237 4040  
Fax: +61 (0)3 9237 4050

### NEW SOUTH WALES

SYDNEY  
6-7 Bushells Place  
Wetherill Park NSW 2164  
Tel: +61 (0)2 8781 3100  
Fax: +61 (0)2 8781 3131

### TASMANIA

DEVONPORT  
115 Don Road  
Devonport TAS 7310  
Tel: +61 (0)3 6424 8574  
Fax: +61 (0)3 6424 9393

### NEW ZEALAND

CMG Electric Motors (NZ) Ltd  
18 Jomac Place  
Avondale Auckland  
NEW ZEALAND  
Tel: +64 9820 3550  
Fax: +64 9820 8504

### SINGAPORE

CMG Electric Motors  
(Asia Pacific) Pte Ltd  
12 Tuas Loop 637346  
SINGAPORE  
Tel: +65 6863 3473  
Fax: +65 6863 3476

### QUEENSLAND

BRISBANE  
7 Mahogany Court  
Willawong QLD 4110  
Tel: +61 (0)7 3246 3246  
Fax: +61 (0)7 3246 3210

CAIRNS ("Service - Repairs - Sales")  
2/159-161 Newell Street  
Bungalow QLD 4870  
Tel: +61 (0)7 4033 1109  
Fax: +61 (0)7 4033 5553

### MACKAY

Paget Mackay QLD 4740  
Tel: +61 (0)7 4952 6244  
Fax: +61 (0)7 4952 6277

### THAILAND

FASCO Motors (Thailand) Limited  
29/7-8 Bangkruay-Sainoi Road  
Bangkrang, Muang Nonthaburi  
District Nonthaburi 11000 THAILAND  
Tel: +66 2447 3300  
Fax: +66 2447 3500

### MALAYSIA

Torin Industries SND BHD  
(MALAYSIA)  
No. 6536A Jalan Bukit Kemuning  
Batu 6 Seksyen 34  
40470 Shah Alam Selangor  
Tel: +60 3 51246157  
Fax: +60 3 51211467

### SOUTH AUSTRALIA

ADELAIDE  
47 Research Road  
Pooraka SA 5095  
Tel: +61 (0)8 8359 1321  
Fax: +61 (0)8 8359 5675

### WESTERN AUSTRALIA

PERTH  
21 Colin Jamieson Drive  
Welshpool WA 6106  
Tel: +61 (0)8 6253 3700  
Fax: +61 (0)8 6253 3710